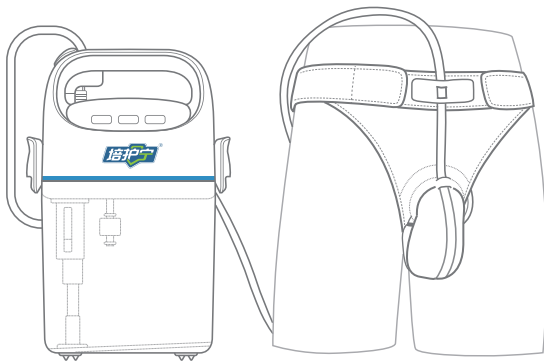


Male Device Instruction Manual

VWOO-D100-W



Welcome to purchasing the VWO0-D100-W intelligent urine collector. Comfortable life starts from VWO0.

Before using this product, please read this manual carefully and keep it properly for reference at any time.

During use, if you have any questions, please send them to the mailbox: mac@VWO0.com, our professionals will serve you.

Symbol Description:

Warning!

Indicates a possible dangerous situation. If the dangerous situation is not avoided, an accident may occur that may cause serious injury to the human body.

Caution!

Indicates a possible dangerous situation. If the dangerous situation is not avoided, it may cause minor injuries to the human body, property damage, environmental damage, failure of the expected function, etc.

Content

1.Product Introduction.....	01
2.Applicable Groups.....	02
3.Functional Description.....	04
4.Technical Parameters.....	05
5.Instructions for Use.....	06
6.Instructions.....	08
7.Alarm Prompt and Release.....	19
8.Fault Analysis And Trouble Shooting.....	20
9.Warranty.....	21

Product Introduction

The Automatic Male Urinary Incontinence Collector Device is an intelligent product for urination care for bedridden urinary incontinence patients. It uses urine detection technology and negative pressure suction principle. The urine collection cup adopts a leak-proof wearable design, which can realize instant automatic sensing, suction and air circulation of urine, and has intelligent power supply and multi-state function reminders.

The urine collection cup is made of medical-grade silicone, which is safe and reliable. The design is novel and unique, with an innovative reverse suction structure. When using it, you only need to wear the urine collection cup with fixed shorts. In multiple body positions, urine can still be sensed, suctioned, and stored in a large-capacity urine collection bucket through a urinary catheter, and finally complete one-button drainage. It is safe to use without pressure, dry and odorless.

Applicable Groups

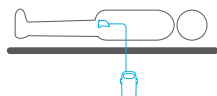
Applicable people:

1. People with urinary incontinence
2. Bedridden people
3. People with disabilities

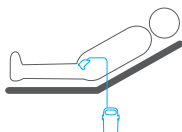
Attention!

1. This product must be used under the care of a caregiver.
2. People with dementia may unconsciously pull the tube or urine cup off.
3. This product comes standard with a leak-proof valve with a diameter of 30mm.
4. This product is not recommended for men with genital atrophy (length < 3cm).
5. Please check the health of the genitals and related parts before use. Use with caution if you have adverse symptoms.
6. Please operate and use it correctly according to the instructions. When using it in bed, the side angle should not be greater than 45°.
7. People with fecal incontinence should use this product as appropriate.
8. Please use the host while it is charging.

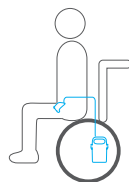
Usage status diagram



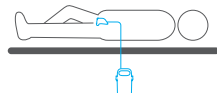
Supine ✓



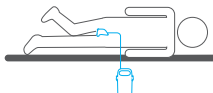
Semi-supine ✓



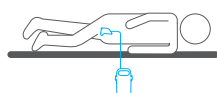
Sitting/Wheelchair ✓



Leg bending ✓

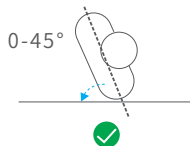


Side-lying ✓



Prone ✗

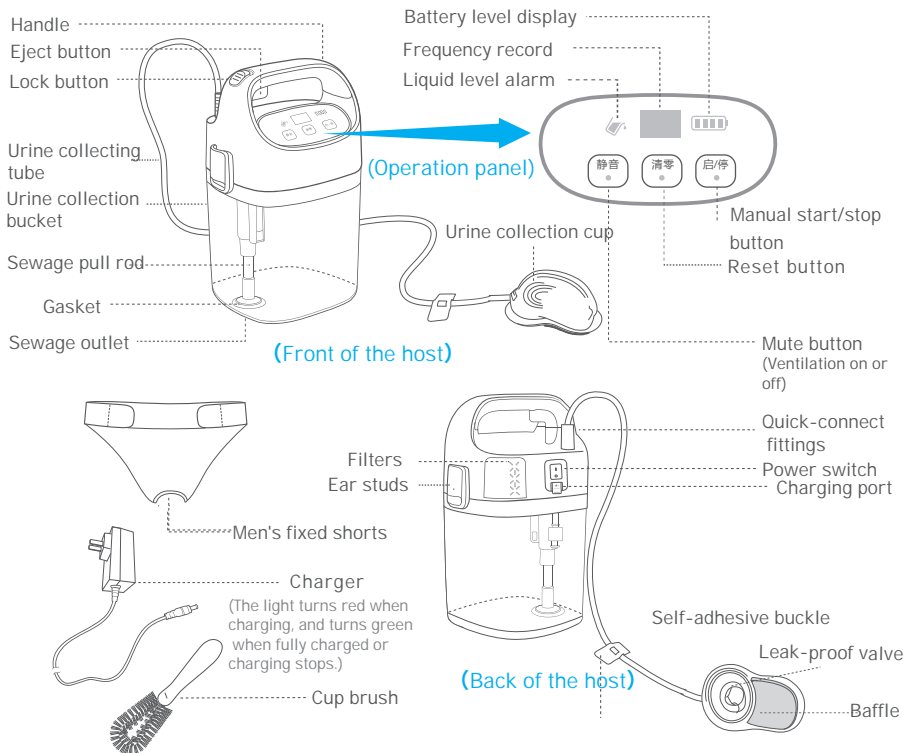
Use angle judgment



✓ Indicates correct usage status ✗ Indicates incorrect usage status

Note! If not used as directed, there is a risk of the urine cup falling off and urine leakage.

Functional Description



Technical Parameters

Host size (length x width x height)	195x158x305mm
Net weight of main unit	1.6kg
Rated voltage	12.6V ---
Rated power	15W
Built-in battery capacity	2600mAh
Charger input	100V—240V~50/60Hz
Charger output	12.6V ---1.0A
Noise	≤55dB (A)
Suction Negative Pressure	≥-25Kpa
Rated capacity of urine collection bucket	2.5L
Automatic suction response time	<0.5s
Suction rate	1.1L/min
Urine collecting tube length	1.5m
Working environment (temperature, humidity)	0°C-40°C、30%-75%

Instructions for Use

Warning!

1. Please use a dedicated charger to charge the machine, and the voltage range must comply with the requirements of the manual.
2. Do not pull the lead to unplug the charger.
3. Keep your hands dry when plugging and unplugging the charger to avoid the risk of electric shock.
4. Do not insert foreign objects or pour water into the charging port of the host.
5. Non-professionals are not allowed to disassemble or repair the host and charger without authorization.
6. Do not rinse the host directly with water.
7. This product must not use accessories not officially provided by VWOO.

Attention!

1. Do not turn off the power or unplug the quick connector when this product is working normally.
2. Do not place the urine collector host in the channel or in an easily touched area.

3. Before use, please make sure that the host is placed in the effective working range of the urine collection tube to prevent the host from being pulled down.
4. After wearing, the pipeline should not be pulled too tight to prevent the urine cover from falling off or blocking the pipeline.
5. Do not place foreign objects in the urine collection cup to avoid pipeline blockage.
6. Make sure that the tilt angle of the host is not greater than 15 when using it.
7. Do not place the urine collection bucket in an environment below 0°C when there is liquid in it.
8. This product should not be used for purposes other than urination care.
9. Before discarding this product, please dispose of the battery in accordance with local regulations.
10. Please be sure to suck out the liquid in the urine collection tube before unplugging the quick-connect connector.
11. Do not open the ear buckle when there is urine in the urine collection bottle to prevent urine from leaking from the bottom.
12. It is recommended to place a urine pad under the buttocks to avoid bedding stains caused by improper operation.
13. The urine collection cup sensor can only automatically suck urine. Please start the suction manually when cleaning.
14. Every 4 hours, the health status of the user's genitals and surrounding related parts must be observed. If any discomfort occurs, please stop using it immediately.

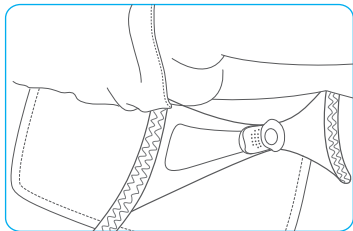
15. Every 12 hours, the genitals and urine collection cup must be cleaned and disinfected according to the instructions. To ensure wearing comfort, wait for the skin to dry after cleaning before wearing (at least half an hour).
16. The urine collection cup needs to be cleaned and disinfected every day. Please perform deep cleaning and disinfection after one week of continuous use.
17. If the product has abnormal conditions or alarms during use, it may cause the urine to be unable to be sensed or sucked. Please refer to the instructions for "Fault Analysis and Troubleshooting" in this manual for processing.
18. People with allergies, please use this product with caution.

Instructions

1. Parts confirmation

Name of each part	Model	Quantity
Host	D100-M	1
Charger	DSS28-1261000-A	1
Filter (built-in)	B100-F	1
Female urine collection cup set (urine collection cup, fixed shorts, cup brush)	/	1

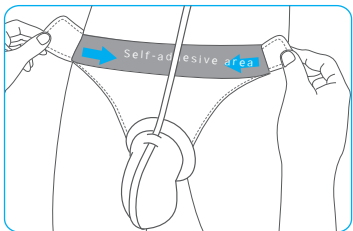
2. Operation steps



- 1** Help the user to lie on **her side**, lay the fixed shorts with the anti-slip strip facing upwards, and spread them flat on the urine pad.

Note!

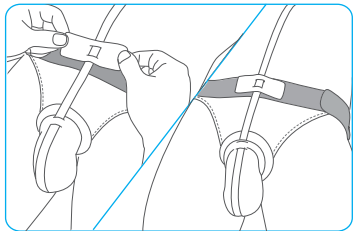
The long belt of the fixed shorts should be close to the user's waist.



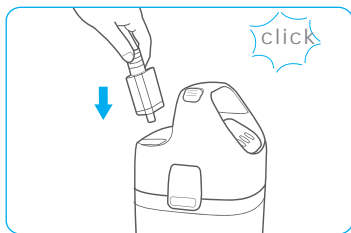
- 2** Put the fixed shorts on the user.

Note!

1. The anti-slip strip is close to the skin.
2. Place the belt on the clothes.



- 3** Use the self-adhesive buckle to fix the urine collection tube to the self-adhesive area.

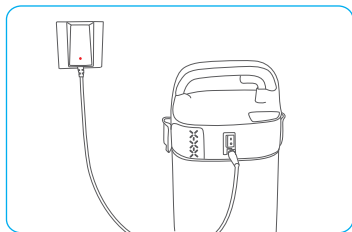


- 4** Insert the quick-connect fitting vertically into the main unit.

Note!

Please check the quick-connect fittings and the main unit connection and make sure they are dry.

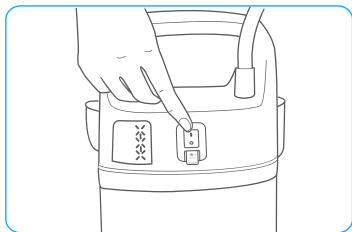
3. Start and use the machine



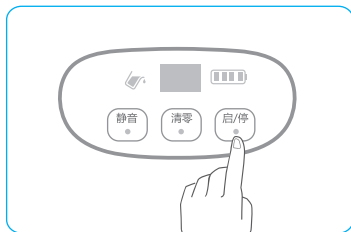
- 1** Open the charging protective cover, insert the charger DC plug into the charging port of the host, and connect the charger to the power supply.

Note!

Please use the host while it is charging.



- 2** Turn on the power and turn the power switch to the "I" position.

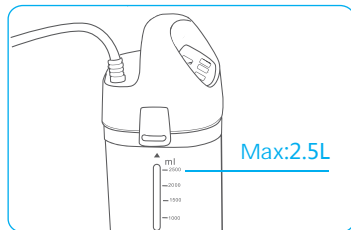


- 3** Press the start/stop button to confirm that the equipment can operate normally.

Note!

When there is urine in the urine collection cup, the host will automatically suck it out.

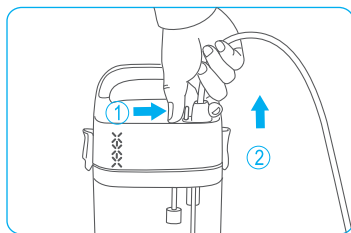
4. Cleaning Urine



- 1** Observe the urine volume in the urine collection bucket and clean up the urine in time.

Note!

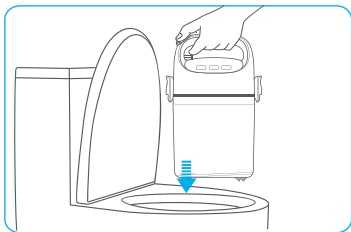
- 1. The maximum capacity is 2.5L.**
- 2. When it exceeds 2.5L, the host stops pumping.**



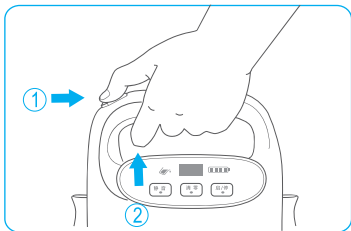
- 2** The first step is to open the buckle, and the second step is to pull out the quick-connect connector vertically upwards.

Note!

Before pulling out the quick-connect connector, be sure to suck out the liquid in the urine collection tube.



- 3** Aim the bottom drain outlet towards the toilet to drain.

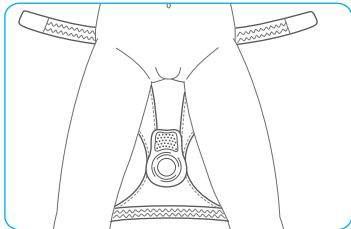


- 4** The first step is to press the top lock button as indicated by the arrow and hold it, and the second step is to pull the discharge button upwards.

Note!

Do not open the ear buttons when there is urine in the bucket to avoid urine leakage.

5. Daily cleaning and disinfection

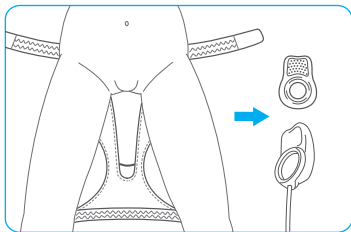


- 1** Unfasten the shorts.

Note!

1. Every 4 hours, the health of the user's genitals and surrounding related.

2. Parts must be observed. If any discomfort occurs, please stop using it immediately.



2

Separate the urine collection cup from the baffle and remove the baffle from the retaining shorts.

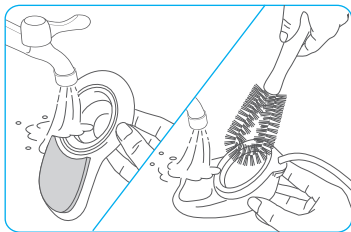


3

Use a towel to clean the genitals and surrounding skin.

Note!

1. To ensure wearing comfort, wait until the skin is dry after washing before wearing (at least half an hour).
2. If necessary, it is recommended to apply talcum powder on the genitals and surrounding areas.

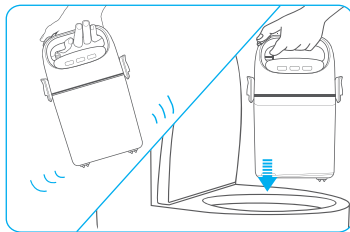


4

Start suction, pour clean water into the urine collection cup, and use a cup brush to scrub the inside of the cup.

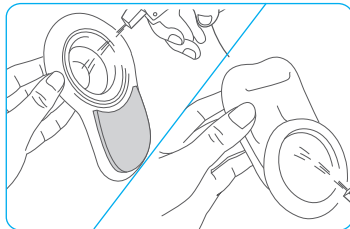
Note!

1. Be sure to keep the machine started before suctioning clean water
2. Do not rinse the main unit directly with water.



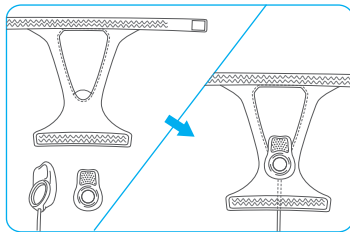
5

Shake the barrel slightly and then drain the waste water.



6

Disinfect the urine collection cup with alcohol and let it dry.



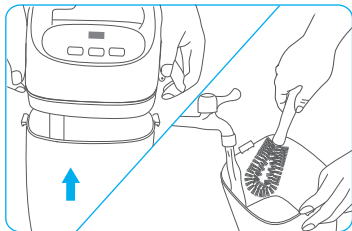
7

First install the baffle plate in the fixed shorts, and then buckle the urine collection cup and the baffle plate to install.

Note!

During installation, the side of the baffle plate with massage nails should be on the same side as the anti-slip strip of the fixed shorts.

6. Deep Cleaning and Disinfection

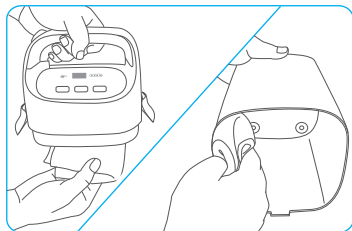


1

If necessary, you can also open the ear clips and use a cup brush to clean the inside of the bucket.

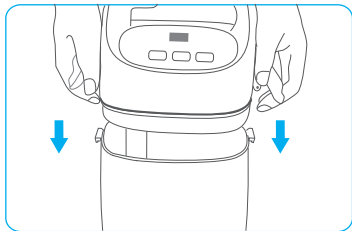
Note!

Before opening the ear clips, make sure there is no residual liquid in the urine collection bucket to prevent liquid leakage.



2

Wipe clean the bottom of the main unit and the inside of the barrel.



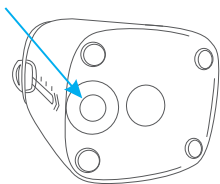
3

Install the upper part of the main unit vertically into the barrel and fasten the ear buckles.

Note!

Make sure the ear clips snap into place on both sides.

Confirm the fit status



4

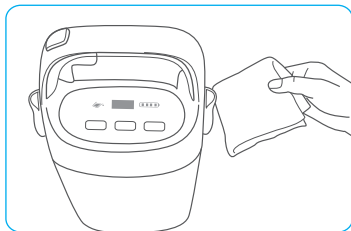
Make sure the gasket is completely in contact with the bottom of the barrel.

Note!

If you find that the gasket is not in contact with the bottom of the barrel, pull the drain button once and confirm again whether it is completely in contact.

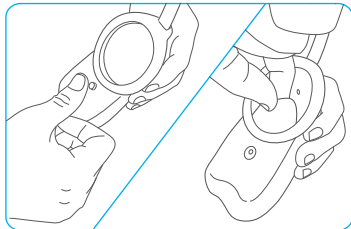
5

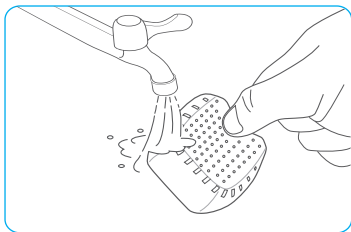
Wipe the surface of the host clean with a rag.



6

Separate the liner from the urine collection cup and remove it.

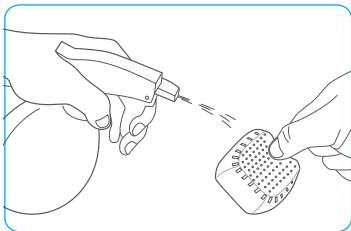




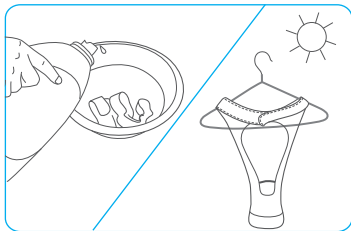
- 7** Wipe the lining clean with a rag.

Note!

It is recommended to deep clean and disinfect the lining 1 to 2 times a week



- 8** Disinfect the liner with alcohol and let dry.



- 9** Wash the shorts and dry them.

Note!



Hand wash, maximum wash temperature 40°C.



Do not bleach.

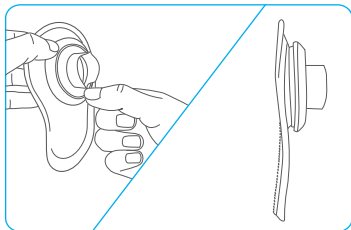


Hang to dry.



Do not dry clean.

7. Special needs

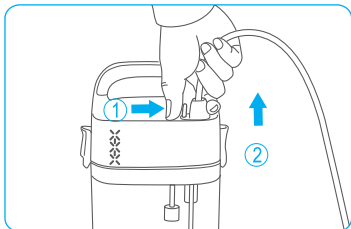


- 1** If the genitals are too short (3cm-6cm), it is recommended to put the leak-proof valve on the inner buckle of the baffle.

Note!

1. Do not pull the leak-proof valve excessively to avoid it falling off or breaking.
2. The leak-proof valve opening should be adjusted to the center of the baffle.
3. The leak-proof valve must be replaced after being used continuously for one week or after it is damaged.

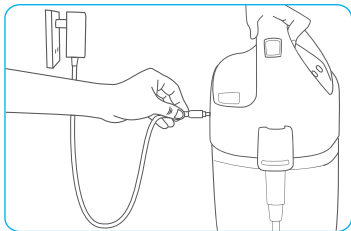
8. Storage and maintenance



- 1** The first step is to open the buckle, and the second step is to pull out the quick-connect connector vertically upwards.

Note!

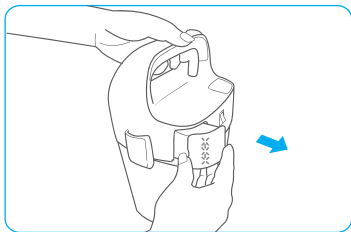
Please suck out the liquid in the urine collection tube before pulling out the quick-connect connector.



- 2** Observe the battery level. If the battery is low, charge it.

⚠ Warning!

For charging warnings, please refer to the instructions for use.



- 3** If there is odor after long-term use, it is recommended to replace the filter (the recommended replacement cycle is 180 days).

Alarm Prompt And Release

Alarm Type	Alarm Description	Remark
Low battery alarm	The buzzer beeps, and the leftmost power indicator LED flashes twice continuously. The start button is invalid and the suction cannot be started.	When the remaining power is less than 10%, the alarm starts. The alarm is lifted after the device is turned off. You should use a dedicated charger to charge the device in time.
Liquid full alarm	The buzzer beeps, the liquid level indicator (red) stays on, the start button is invalid, and the suction cannot be started (the alarm sounds during suction, and the air pump stops until the suction is completed)	The alarm starts when the liquid level in the barrel is $\geq 5L$. When the main unit is working and the liquid full alarm occurs, it will not stop working immediately until the suction is completed. After the liquid is cleared, the alarm is lifted and the machine enters the standby state.
Communication error alarm	1. The buzzer sounds a "beep-beep" alarm, the digital tube displays code E1, the start button is invalid, and the suction cannot be started. 2. The alarm sounds during suction, and the air pump stops immediately.	Start alarming when the connection between the sub-control board and the main control board fails
Dumping alarm	1. The buzzer sounds a "beep-beep" alarm, the digital tube displays code E2, the start button is invalid, and the suction cannot be started. 2. The alarm sounds during suction, and the air pump stops immediately.	When the tilt angle of the host is greater than 30° , the alarm starts. When the host is placed horizontally, the alarm is lifted and the host enters standby mode.
Sensor failure alarm 1	The buzzer sounds a "beep-beep-beep" alarm, the digital tube displays code E3, and the host is in a continuous suction state	The host starts to sound the alarm after continuous suction for 10 minutes. Clean the urine cover according to the instructions. After that, the alarm is lifted and the machine enters the standby state.
Sensor failure alarm 2	The buzzer beeps "beep-beep..." continuously. The code tube displays code E4, and the main unit starts pumping.	The alarm starts when the urine sensor is abnormally connected. The alarm is cleared after the urine collection tube component is correctly connected to the host or the urine collection tube component is replaced, and the system enters the standby state.

Fault Analysis And Trouble Shooting

Fault phenomenon	Possible causes	Workaround
Unable to turn on	Low battery	After charging is complete, restart the device
	The device is damaged	Please contact after-sales maintenance
Unable to charge	Poor contact	Fully connect the charger to the socket and the host.
	The socket is not powered	Confirm that the socket itself is powered
	The battery inside the device is damaged	Please contact after-sales maintenance
Unable to start suction	Sensor failure	Please contact after-sales maintenance
	Abnormal pipe connection	Reconnect the quick-connect fitting and make sure it is in place.
	The device enters alarm state	Check the cause of the alarm and resolve it according to the alarm prompt table
	The pumped liquid is clean water	Please start the suction manually in advance when cleaning
	Bottom gasket not fitted	Pull up the release button and make sure it fits.
	The device is damaged	Please contact after-sales maintenance
Continuous automatic start of suction	There is residual liquid in the urinal	Rinse the diaper with clean water
	Sensor failure	Please contact after-sales maintenance
A strange sound when pumping	Pipeline bending and blockage	Adjust the pipeline in time to keep it unobstructed
	A foreign object in the urinary sheath blocking the suction port	Clean the urinal promptly
	Gasket leaks	Please contact after-sales maintenance
Leakage of urine during suctioning	The sheath is not worn correctly	Wear the diaper correctly according to the instructions
	Lying in bed at too large an angle	Use within the scope specified in the instructions

Warranty

1 Warranty Content

Type	Warranty Content	Warranty period	Recommended use period
Host	Main unit (including built-in lithium battery)	1 Year	/
Accessories	Charger	1 Year	/
	Urine collection cup assembly	1 Month	3 Month
	Men's fixed shorts	/	3 Month
	Filters	/	/
	Cup brush	/	/

2 Non-warranty coverage

- 1.Damage caused by the consumer's failure to transport, use, maintain or store the product in accordance with the product manual.
- 2.Damage caused by consumers disassembling and repairing the product themselves.
- 3.Damage caused by the use environment (such as voltage) not meeting the requirements of the product manual.
- 4.Normal fading and wear of this product during use are not covered by the warranty.